

Low Maintenance Screening & Fencing



NewTechWood composite timber screening looks like natural timber, but requires next to no maintenance. Designed to handle the harshest of Australian conditions, NewTechWood is fade resistant so will look good for years to come. Create stylish and private areas in your home or commercial al fresco areas.

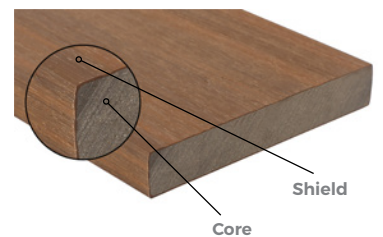


Benefits

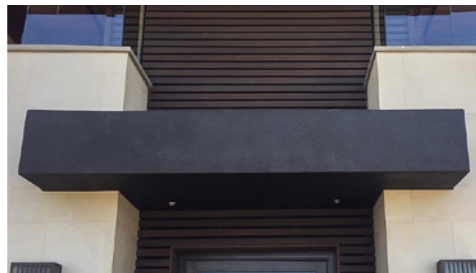
- ✓ Full 360° capping for ultra protection
- ✓ UV protection
- ✓ Fully finished - no painting, no oiling
- ✓ Environment friendly - made from 95% recycled materials
- ✓ Natural timber look
- ✓ Easy Installation
- ✓ Durable and long lasting
- ✓ Profile ranges for any project
- ✓ Resistant to fading
- ✓ 25-year limited warranty

The Ultrashield Difference

NewTechWood is a 360° fully capped wood plastic composite. The unique Ultrashield technology shields all four sides for ultra protection against moisture and guarantees durability.



Slats as Fencing Panels



UH17 Screening as Facade

Imported and distributed by

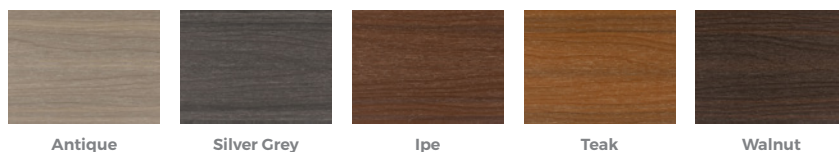


Profile Specifications

SCREENING Code	Product Description	Dimensions	Length	Max Span	Fixing Method	Colours
US36	Solid Screening Board	70mm x 17mm	5.4m	900mm	Screw Fix or Aluminium Channel	SI, TK, IP
UH17	Hollow Screening Board	60mm x 42mm	5.4m	1350mm	Screw Fix	IP
UH25	Hollow Screening Board	100mm x 52mm	5.4m	1500mm	Screw Fix	IP
US06	Fascia Board	138mm x 15mm	4.88m	800mm	Screw Fix	AT, SI, TK, IP, WN
UB01	Batten Board	56mm x 32mm	5.4m	900mm	Screw Fix	(TBA)

NOTE: Board widths may vary +/- 2mm

Colour Guide



Colour Codes

AT Antique
SI Silver Grey
IP IPE
TK Teak
WN Walnut



UH25 and UH17 (Ipe)



US36 (Silver Grey)



US36 (Teak)



US36 (Ipe)



NewTechWood versatility

NewTechWood has a wide range of profiles to help you build screening and fencing projects.

Mix and match boards with different colours, patterns, thicknesses and widths to create a unique combination for a variety of applications: facades, privacy screens or fencing.



Available from:

To ensure Warranty compliance, it is important to install NewTechWood® as per our installation guidelines, which can be downloaded from: newtechwood.com.au/technical-information