

NewTechWood Castellations Cladding is reminiscent of the top of a castle wall having a series of rectangular alternating parapets and indentations.



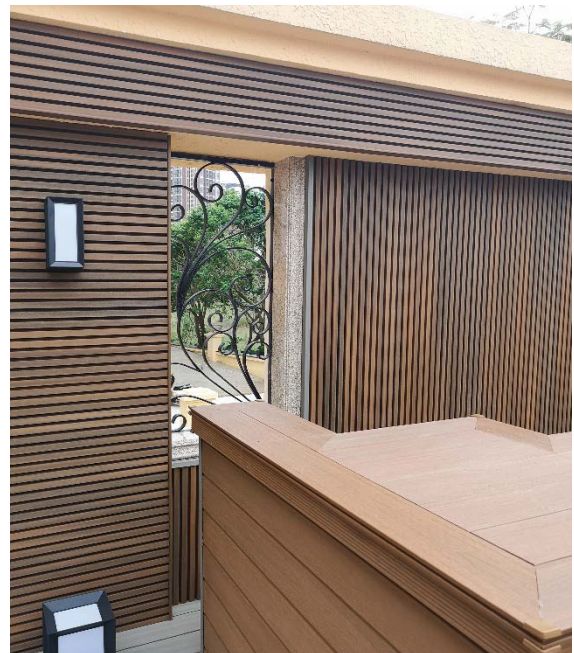
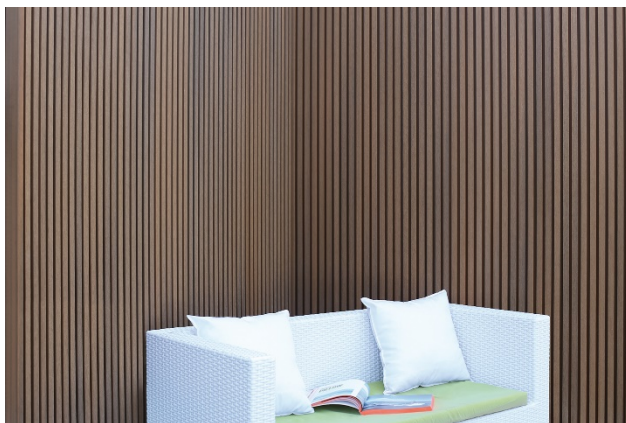
UH61 Castellations Cladding Board

Castellations has once again become a popular architectural trend in both commercial projects and stylish contemporary residential designs. On a facade it achieves the look of parallel castellated timber battens with a narrow shadowline, or rebate, between each one.

NewTechWood’s Castellations 5-rib cladding panel, in three modern colours, provides a multi-dimensional, visually appealing addition to any building project. It provides the natural appearance of timber without the maintenance. It is an attractive alternative for creating a stylish external facade, screening or as a ceiling treatment.

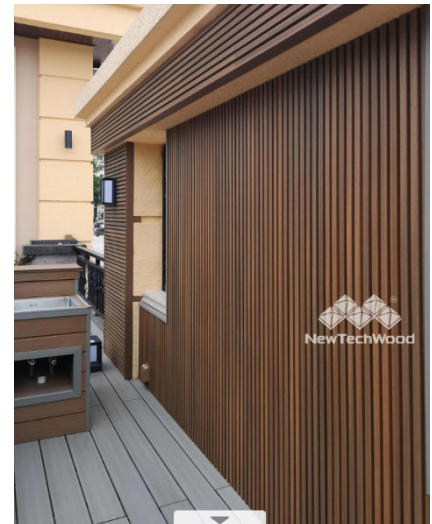
NewTechWood’s Castellated cladding boards are fully capped with UltraShield so there is no need to oil, paint and stain – ever! The shield gives high stain and UV resistance making it long lasting and durable.

Create striking, decorative feature walls with NewTechWood Composite Castellations Cladding:



NewTechWood Cladding Advantages

- ✓ Fully finished product – no painting or oiling
- ✓ Long lasting
- ✓ Resistant to UV, fading, stains and termites
- ✓ Residential & commercial applications
- ✓ Concealed fixings
- ✓ Environmentally friendly – made from 95% recycled materials
- ✓ Perfect for coastal locations
- ✓ 25 Year Warranty



The Ultrashield Advantage

As with all NewTechWood products, the cladding enjoys full capping, ensuring it is high stain and UV resistant and making your architectural aesthetic timeless and maintenance free.

The Ultrashield advanced capped composite material has a strong and durable polymer shield which fully caps the core. The shield is made of special engineering grade polymer and additives with a water absorption rate as low as 0.1%.

It is a fully finished product, which means it never needs to be treated with a moisture barrier. Being fully capped it is hydroscopic – impervious to water absorption.

Castellated eco-cladding boards are 60% recycled dense wood fibre mixed with 40% high grade recycled plastics (HDPE).



Profile Overview

A range of composite finishing trims, for corners and around windows, along with our hidden clip system, make for a streamlined professional finish.

With this full range of finishing accessories available to complete the project, the finished product will give and maintain, a high-end look without the need of periodic maintenance.

**UH61 Castellation
Cladding Board**



**UH 50
End Trim**



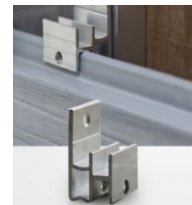
**UH 51
Corner Trim**



**AW02
Starter Profile**



**AW08
Cladding Clips**



Castellation Wall Cladding Specifications

Profile Code	Description	Dimensions	Length	Finish	Coverage	LM p/m ²	Max Span	Clips p/m ²	Kg's P/LM	MOQ Non Stocked Colours
UH61	Castellation Cladding Board	196mm x 25mm	4.88m	H1	186mm	5.4	500mm	12	2.7	170

To estimate the quantity of boards required, and for full specifications on all cladding profiles and fixings, please refer to the **Specification Table on Page 3E**.

Hidden Fixings

Utilising hidden fixings that hold the boards perfectly in place as well as raising them up from the wall joist system, allows for air circulation between the cladding and joists.

For full specifications on all cladding fixings and to estimate quantities required, please refer to the **Specification Table on Page 3E**.

Refer to the **Cladding Installation Guide on Page 3D**

For more information:

VIC, TAS, SA



25 Gaine Road
Dandenong VIC 3175
T: (03) 8769 7111
E: ntw.vic@brittontimbers.com.au

ALL OTHER STATES – WA, NSW, QLD, NT



Head Office
24 Tichborne Street
Cockburn Central, WA 6164
T: (08) 9494 1051
E: info@urbandirectwholesale.com.au

Websites: www.newtechwood.com.au
www.urbandirectwholesale.com.au

